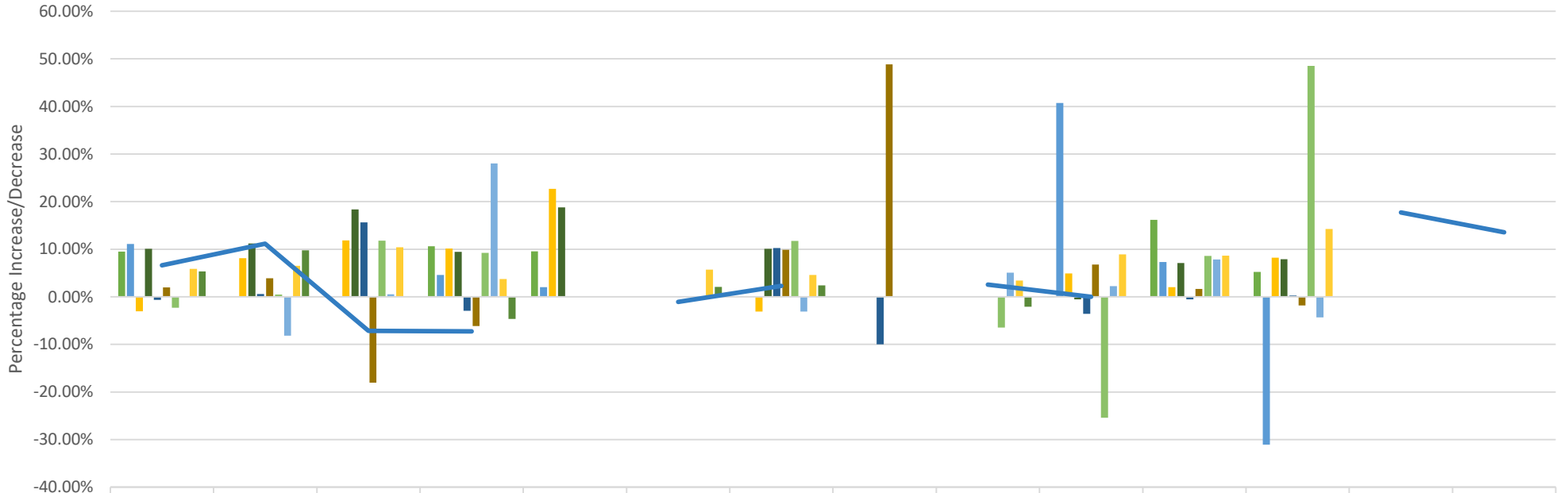


## CalPERS 10 Year Rate History 2013-2023



	Kaiser	Anthem Select	Anthem Traditional	Blue Shield Access +	Blue Shield NetValue	Blue Shield Trio	United Health Care	Health Net Smartcare	Western Health Advantage	PERS Select	PERS Choice	PERSCare	PERS Gold	PERS Platinum
2013	9.53%			10.58%	9.58%					-0.04%	16.18%	5.23%		
2014	11.11%	0.00%	0.00%	4.57%	2.03%		0.00%			40.74%	7.33%	-31.09%		
2015	-3.03%	8.11%	11.87%	10.12%	22.65%		-3.09%			4.91%	1.99%	8.20%		
2016	10.09%	11.21%	18.34%	9.41%	18.76%		10.09%	0.00%		-0.57%	7.11%	7.88%		
2017	-0.65%	0.56%	15.63%	-2.93%	0.00%		10.26%	-10.02%		-3.59%	-0.56%	0.25%		
2018	1.94%	3.88%	-18.02%	-6.13%			9.86%	48.81%	0.00%	6.77%	1.65%	-1.82%		
2019	-2.27%	0.49%	11.77%	9.21%			11.72%	0.00%	-6.46%	-25.37%	8.59%	48.52%		
2020 *	0.03%	-8.16%	0.51%	28.01%		0.00%	-3.11%	0.00%	5.06%	2.28%	7.84%	-4.35%		
2021	5.88%	6.52%	10.38%	3.75%		5.70%	4.58%		3.42%	8.91%	8.67%	14.26%		
2022	5.34%	9.75%	0	-4.62%		2.05%	2.41%		-2.08%	0.00%	0.00%	0.00%	0.00%	0.00%
2023	6.61%	11.13%	-7.15%	-7.25%		-1.07%	2.33%		2.55%	0.00%			17.74%	13.54%

■ 2013   
 ■ 2014   
 ■ 2015   
 ■ 2016   
 ■ 2017   
 ■ 2018   
 ■ 2019   
 ■ 2020 \*   
 ■ 2021   
 ■ 2022   
 ■ 2023